



**Infraweave**



**7831 Architecture**



**7885 Complex**



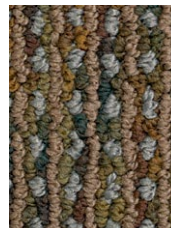
**7565 Composition**



**7685 Conformation**



**7856 Foundation**



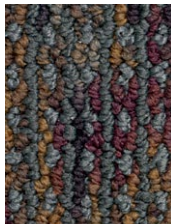
**7868 Framework**



**7583 Groundworks**



**7678 Infrastructure**



**7978 Proportion**



**7388 Schematic**



**7846 Substratum**



**7983 Superstructure**

**PRODUCT SPECIFICATIONS**

Style Name .....Infraweave  
 Product Type.....Broadloom  
 Construction .....Tufted  
 Surface Appearance .....Textured Patterned Loop  
 Nylon Type.....Colorstrand® Nylon  
 Gauge .....1/10 (39.37 rows per 10 cm)  
 Pile Weight .....28.0 oz. per sq. yd. (949 g/m<sup>2</sup>)  
 Pile Thickness .....127" (3.23 mm)  
 Stitches Per Inch.....12.8 (50.39 per 10 cm)  
 Dye Method.....Solution Dyed/Space Dyed  
 Protective Treatment.....Sentry Plus  
 Density .....7,937  
 Weight Density .....222,236  
 Primary Backing .....Woven Polypropylene

Backing Foundation.....Single Primary  
 Secondary Backing.....Weldlok® Plus  
 Pattern Repeat .....80" (W) x .42" (L)  
 Width .....12' (3.66 m)  
 Flammability .....ASTM E 648 Class 1 (Glue Down)  
 Smoke Density .....ASTM E 662 Less Than 450  
 Static Propensity.....AATCC-134 Under 3.5 KV  
 IAQ Green Label .....14148216  
 CRI Rating.....Severe Traffic  
 Warranties: Lifetime Limited Weldlok Plus Warranty, Lifetime Static