



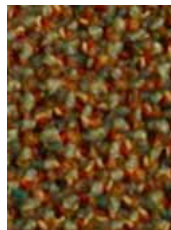
Fairfield II EuroFlex



3117 Mosaic Burgandy



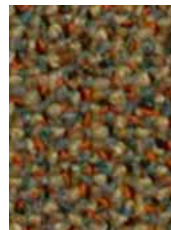
3224 Terra Clay



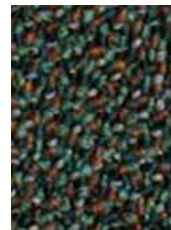
3368 Lava Brick



3466 Kimono Violet



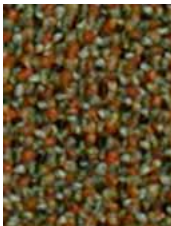
3542 Desert Oasis



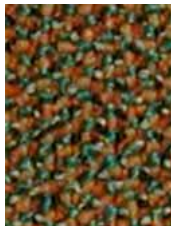
3552 Meadow Garden



3554 Clover Sage



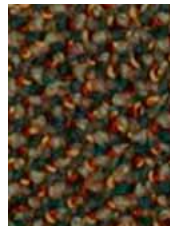
3556 Olive Cast



3558 Earthen Forest



3566 Summer Solstice



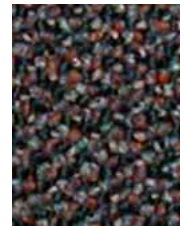
3573 Ember Dusk



3579 Evening Lake



3648 Herbal Moss



3667 Lapis Sky

COLORWAY CONTINUED ON NEXT PAGE

PRODUCT SPECIFICATIONS

Style Name..... Fairfield II EuroFlex
 Product Type Broadloom
 Construction Tufted
 Surface Appearance Textured Patterned Loop
 Nylon Type Colorstrand® SD Nylon
 Gauge 1/10 (39.37 rows per 10 cm)
 Pile Weight 28.0 oz. per sq. yd. (949 g/m²)
 Pile Thickness100" (6.96 mm)
 Stitches Per Inch 8.3 (32.68 per 10 cm)
 Dye Method Solution Dyed
 Protective Treatment Sentry Plus
 Density 10,080
 Weight Density 282,240
 Primary Backing Woven Polypropylene

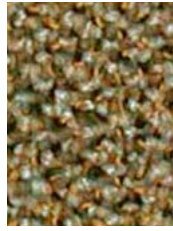
Backing Foundation Single Primary
 Secondary Backing Woven Polypropylene
 Pattern Repeat80" (W) x 1.0" (L)
 Width 12' (3.66 m)
 Flammability ASTM E 648 Class 1 (Glue Down)
 Smoke Density ASTM E 662 Less than 450
 Static Propensity AATCC-134 Under 3.5 KV
 IAQ Green Label 14148216
 Warranties: Lifetime EuroFlex Warranty, Lifetime Limited Colorfastness to Light, 10 Year Limited Colorfastness to Atmospheric Contaminants, 10 Year Stain Warranty, Lifetime Static



3669 Blue Strata



3676 Landscape Green



3736 Natural Aloe



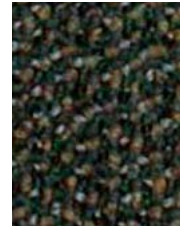
3739 River Rock



3772 Steel Mesh



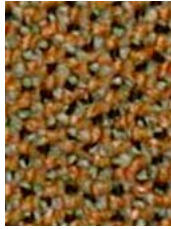
3776 Corrugated Metal



3778 Pepper Dust



3842 Amber Grain



3886 Honey Comb



3978 Weathered Shingle