



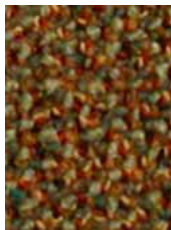
Fairfield II



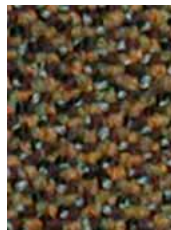
3117 Mosaic Burgandy



3224 Terra Clay



3368 Lava Brick



3466 Kimono Violet



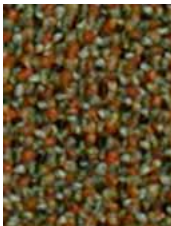
3542 Desert Oasis



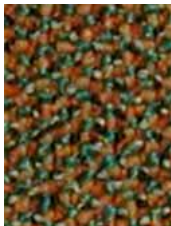
3552 Meadow Garden



3554 Clover Sage



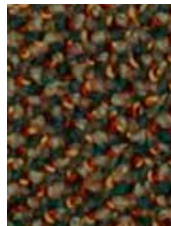
3556 Olive Cast



3558 Earthen Forest



3566 Summer Solstice



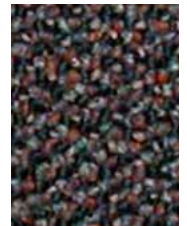
3573 Ember Dusk



3579 Evening Lake



3648 Herbal Moss



3667 Lapis Sky

COLORWAY CONTINUED ON NEXT PAGE

PRODUCT SPECIFICATIONS

Style Name..... Fairfield II
 Product Type..... Broadloom
 Construction..... Tufted
 Surface Appearance..... Textured Patterned Loop
 Nylon Type..... Colorstrand® SD Nylon
 Gauge..... 1/10 (39.37 rows per 10 cm)
 Pile Weight..... 28.0 oz. per sq. yd. (949 g/m²)
 Pile Thickness..... .100" (6.96 mm)
 Stitches Per Inch..... 8.3 (32.68 per 10 cm)
 Dye Method..... Solution Dyed
 Protective Treatment..... Sentry Plus
 Density..... 10,080
 Weight Density..... 282,240
 Primary Backing..... Woven Polypropylene

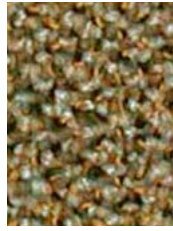
Backing Foundation..... Single Primary
 Secondary Backing..... Woven Polypropylene
 Pattern Repeat..... .80" (W) x 1.0" (L)
 Width..... 12' (3.66 m)
 Flammability..... ASTM E 648 Class 1 (Glue Down)
 Smoke Density..... ASTM E 662 Less than 450
 Static Propensity..... AATCC-134 Under 3.5 KV
 IAQ Green Label..... 14148216
 Warranties: Lifetime Limited Wear Warranty, Lifetime Limited
 Colorfastness to Light, 10 Year Limited Colorfastness to Atmospheric
 Contaminants, 10 Year Stain Warranty, Lifetime Static



3669 Blue Strata



3676 Landscape Green



3736 Natural Aloe



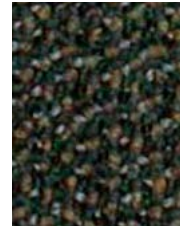
3739 River Rock



3772 Steel Mesh



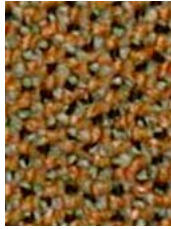
3776 Corrugated Metal



3778 Pepper Dust



3842 Amber Grain



3886 Honey Comb



3978 Weathered Shingle